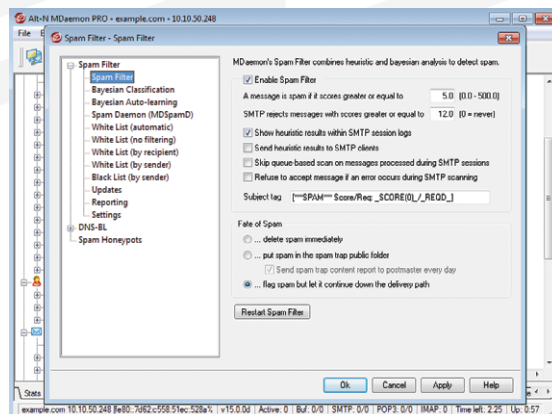


## Whitelisting Features

The MDAemon whitelisting feature allows you to customize spam filter behavior to allow messages from trusted senders to pass through without spam filtering, or to have their spam scores adjusted downward. The following guidelines will help clarify how the spam filter whitelist feature in MDAemon works, and how to configure it for optimal results.

In this guide, the following four settings are explained:

- *White List (no filtering)*
- *White List (by recipient)*
- *White List (by sender)*
- *Black List (by sender)*



The difference between “**White List (no filtering)**” and “**White List (by recipient)**” or “**White List (by sender)**” is that while entries listed under “**White List (no filtering)**” will be completely exempt from spam filtering, entries listed under “**White List (by recipient)**” and “**White List (by sender)**” will have their spam scores lowered. By default, 100 points are deducted from the spam score. You can adjust this number via the **Spam Filter | Settings** screen.

### White List (no filtering)

exempt all emails from user01@example.com, on a new line, enter the following:

- *From user01@example.com*

To exempt all messages to user01@example.com from spam filtering, on a new line, enter the following:

- *To user01@example.com*

If a header value is not specified, then the address entered will be tested against the SMTP RCPT envelope value. Thus, if the following value is entered on one line:

- *user01@example.com*

...then all email messages addressed to user01@example.com will bypass the spam filter. This is not recommended, of course, because this would cause user01@example.com to receive more spam.

## White List (by recipient)

Entries added to “**White List (by recipient)**” will have their spam scores lowered by a specified number of points. To determine how many points will be subtracted, click on **Options** in the left-hand navigation menu of the **Spam Filter** screen, then look for the field “**A white list match subtracts this many points from the spam score.**” Each line on the “**White List (by recipient)**” screen must begin with “**whitelist\_to,**” followed by the address to be whitelisted. Here is an example:

- *whitelist\_to user01@example.com*

In this example, all messages addressed to user01@example.com will have their spam scores lowered by the designated number of points specified on the **Spam Filter | Options** screen. This does not guarantee, however, that the message will not be counted as spam. For example, if the spam score threshold is set to 5.0 and the whitelist value is set to 50, and then a particularly excessive spam message arrives that gets a spam score of 55.0 or higher before the whitelist value is subtracted, then the final spam score of the message will be at least 5.0, thus denoting it as spam. This would rarely happen, however, because spam rarely has a value that high unless it contains some other exceptionally high-scoring element, such as a blacklisted address.

## White List (by sender)

Similar to “**White List (by recipient)**,” entries added to “**White List (by sender)**” will have their spam scores lowered by the number of points specified on the **Spam Filter | Options** screen. Each line begins with “**whitelist\_from,**” followed by the address to be whitelisted. Here is an example:

- **whitelist\_from user01@example.com**

In this example, all email messages from user01@example.com will have their spam scores lowered by the number of points designated on the **Spam Filter | Options** screen.

With each of the above examples, a wildcard can be used to represent a series of characters. For example, to whitelist all email from the example.com domain, enter the following:

- **whitelist\_from \*@example.com**

## Black List (by sender)

Black List (by sender) – Entries listed on the “**Black List (by sender)**” screen will have their spam scores adjusted upwards by the number of points specified on the **Spam Filter | Options** screen. Here is an example entry for the “**Black List (by sender):**”

- *blacklist\_from \*@example.com*